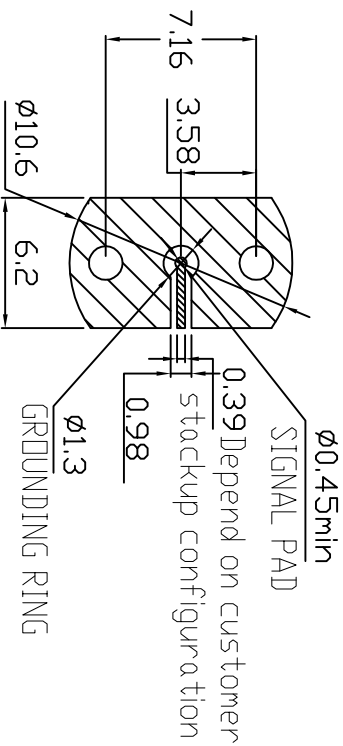


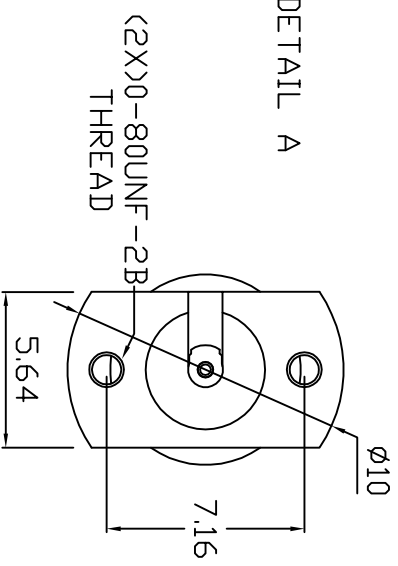
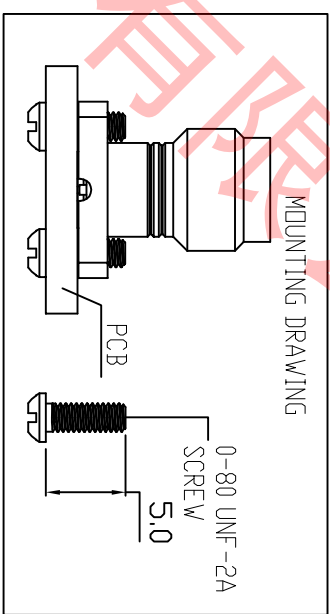
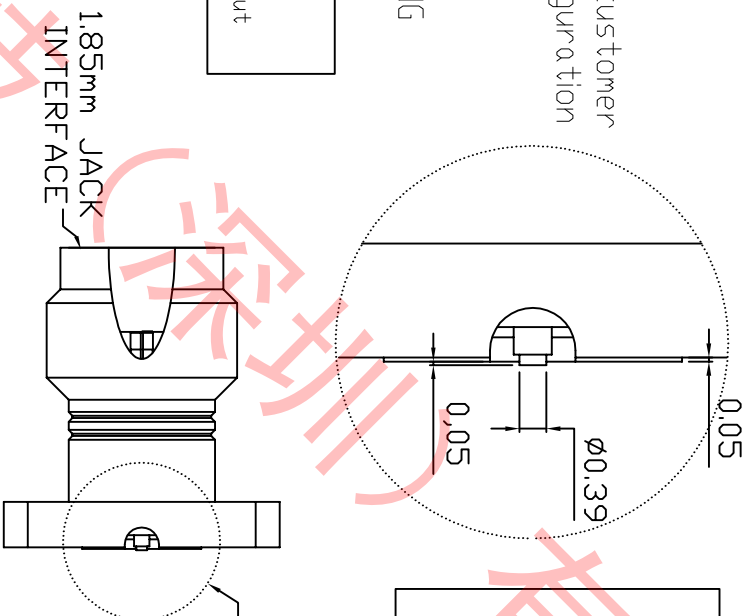
OUTLINE DRAWING:

RECOMMENDED PCB LAYOUT



Above Pcb layout is for reference only, the trace impedance depends on pcb material, stackup, customised trace and so on. It is necessary to make a SI analysis before use this pcb layout

DETAIL A



NOTE:

1. IMPEDANCE: 50OHM
2. FREQUENCY RANGE: DC~67GHZ
3. VSWR: 1.5max
4. INSERTION LOSS: 0.05xsqrt((F IN GHz))
5. D.W.V: 500 VRMS MIN
6. OPERATING TEMP: -40~+155°C

BODY	STAINLESS STEEL	PASSIVATED
DIELECTRIC	ULTEM	NATURAL
CENTER CONTACT	BECCU	GOLD
DESCRIPTION	MATERIAL	FINISH

DIMENSION:	MM	SERIES:	1.85MM	CABLE:	N/A
General tolerance Unless otherwise specified					
PRODUCT SPEC:	ASSEMBLY INSTR	DRAWN:	FAN	28-07-2021	Title: DSK-1.85MM Microstrip 0.8~2.4MM BDRAD
CHECKED:	FAN	28-07-2021	APPROVED:	Matthew	28-07-2021
Angles:					
PART NUM: S101850059010					

DesignCon

CUSTOMER DRAWING

This drawing is a controlled document

DRAWING NUM: 185010
SCALE: N/A
REMARK:

PAGE: 1/1