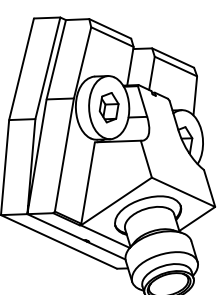
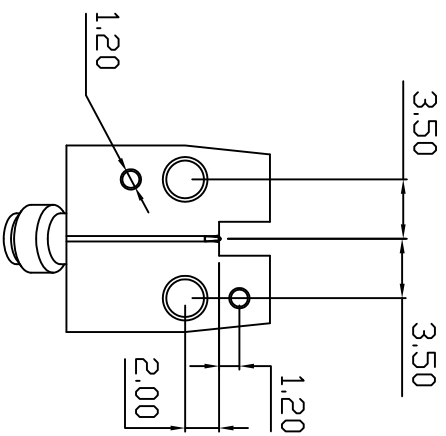
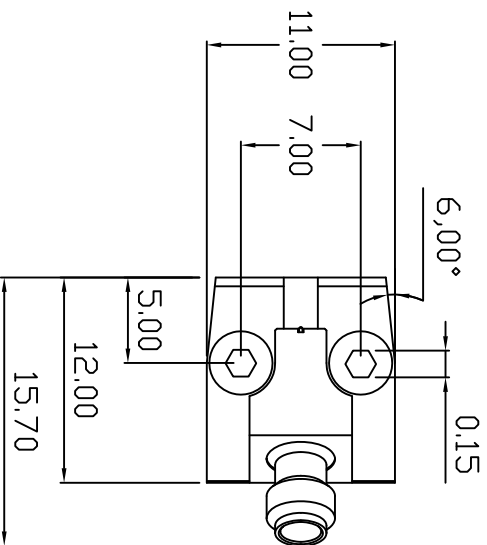
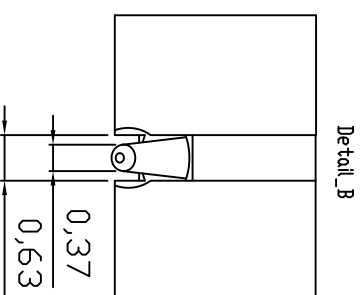
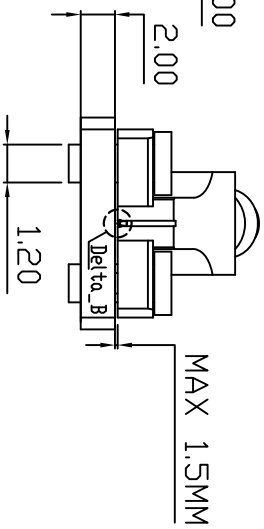
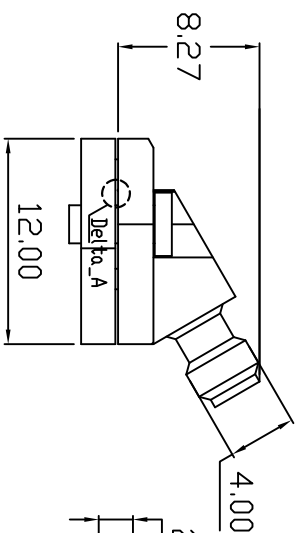
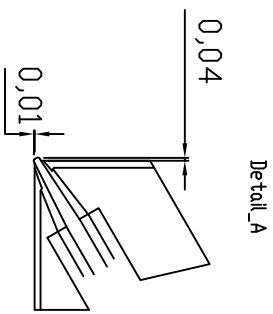


OUTLINE DRAWING:



- NOTE:
- 1.IMPEDANCE: 50ΩHM
 - 2.FREQUENCY RANGE: DC~110GHZ
 - 3.VSWR: 1,5max
 - 4.INSERTION LOSS: 0,05xsqrt(FF IN GHZ))
 - 5.DWV: 500 VRMS MIN
 - 6.OPERATING TEMP: -40~+155°C

BODY	STAINLESS STEEL	PASSIVATED
DIELECTRIC	ULTEM	NATURAL
CENTER CONTACT	BEUC	GOLD
DESCRIPTION	MATERIAL	FINISH

DIMENSION: MM	SERIES:1,00MM	CABLE: N/A	<p style="text-align: center;">DesignCon</p> <p>Title: DSK-1,00mm-SMD-Jack-Connector</p>
General tolerance Unless otherwise specified	PRODUCT SPEC: ASSEMBLY INSTR		
0 Plance: ±0,2	DRAWN: QIAD	24-10-2024	
1 Plance: ±0,2	CHECKED: FAN	24-10-2024	
2 Plance: ±0,2	APPROVED: Ma.t.thew	25-10-2024	PART NUM: S101000059011
Angles:	CUSTOMER DRAWING		DRAWING NUM: 100011
This drawing is a controlled document			SCALE: 10:1
			REMARK: N/A
			PAGE: 1/1